

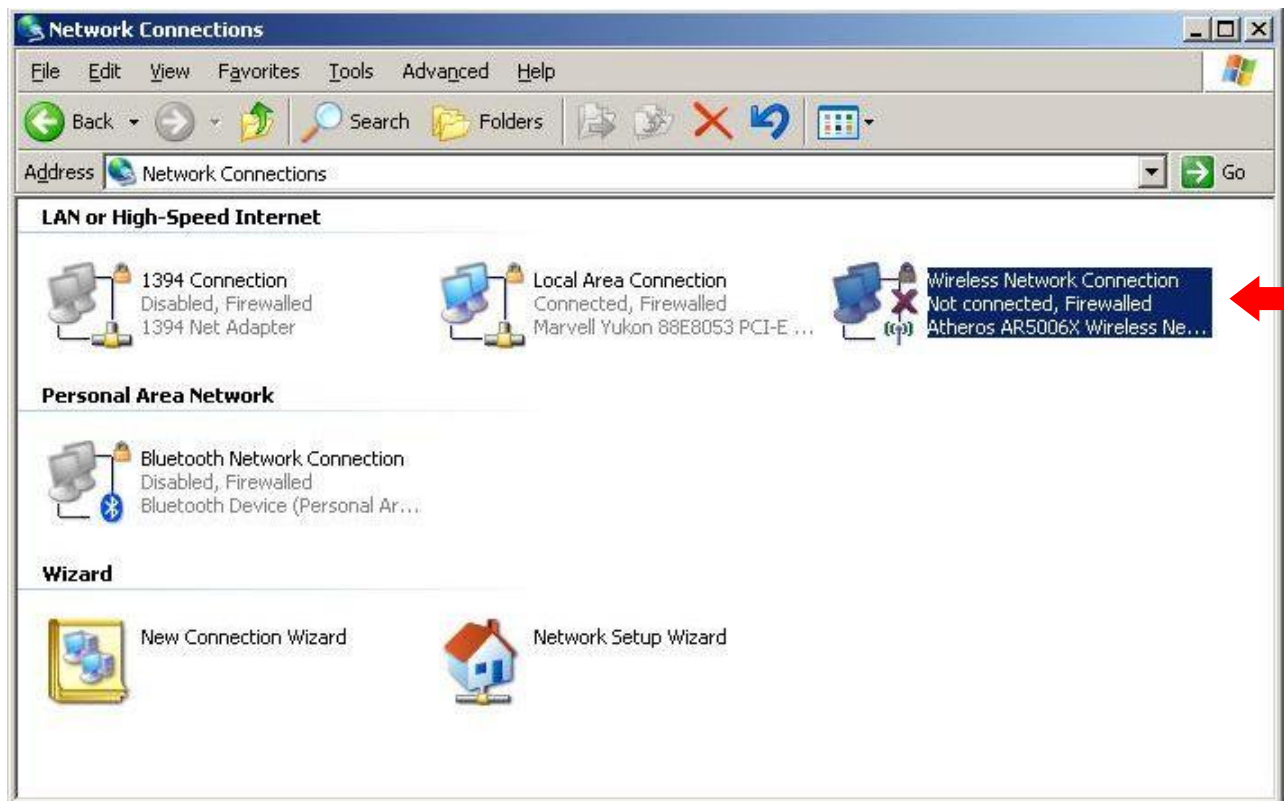
Concord University Wireless Setup for Windows XP

Concord's campus wireless services using the ssid name 'cusecure' are encrypted using wpa2 and require authentication to use, this requires a small one-time setup on the user's part to connect successfully. These instructions should be sufficient to help most Windows XP Professional users set up their computers to use the campus wireless services.

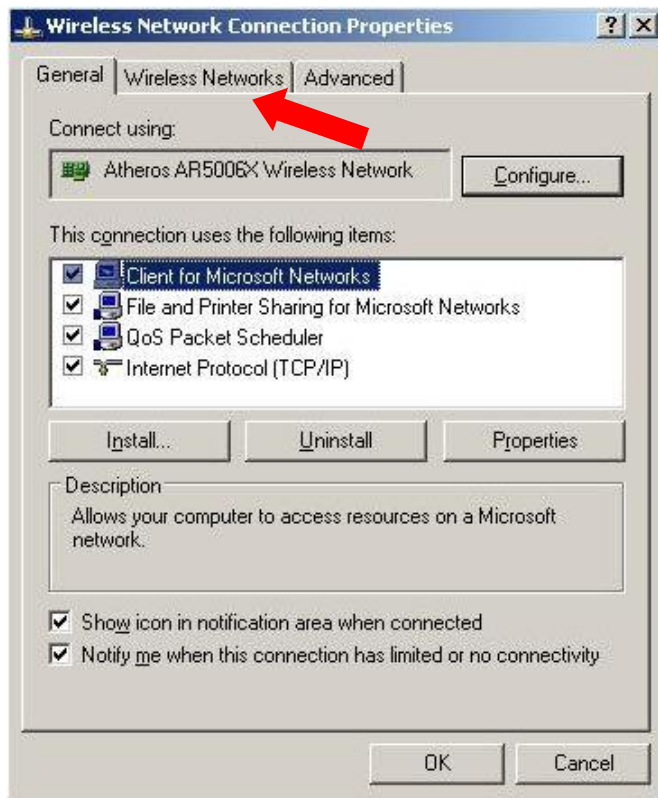
Getting Started

These instructions assume you have a computer running Windows XP Professional with Service Pack 3 (service pack 3 is required) and an installed wireless network interface card (NIC) which supports wpa2 encryption.

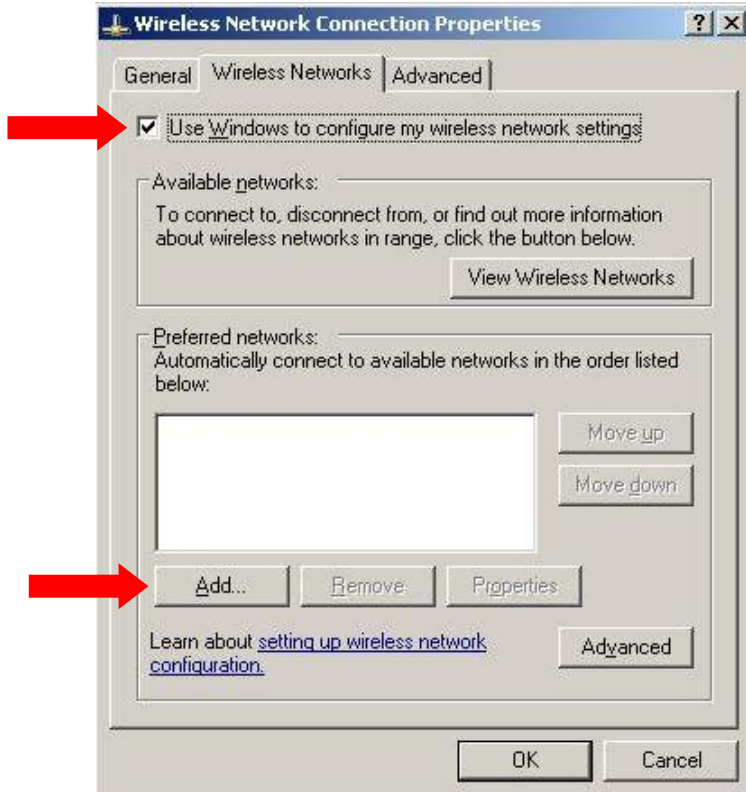
1. Go to **Start > Control Panel > Network Connections**.
2. Select your wireless network connection, right click on it and select **Properties**.



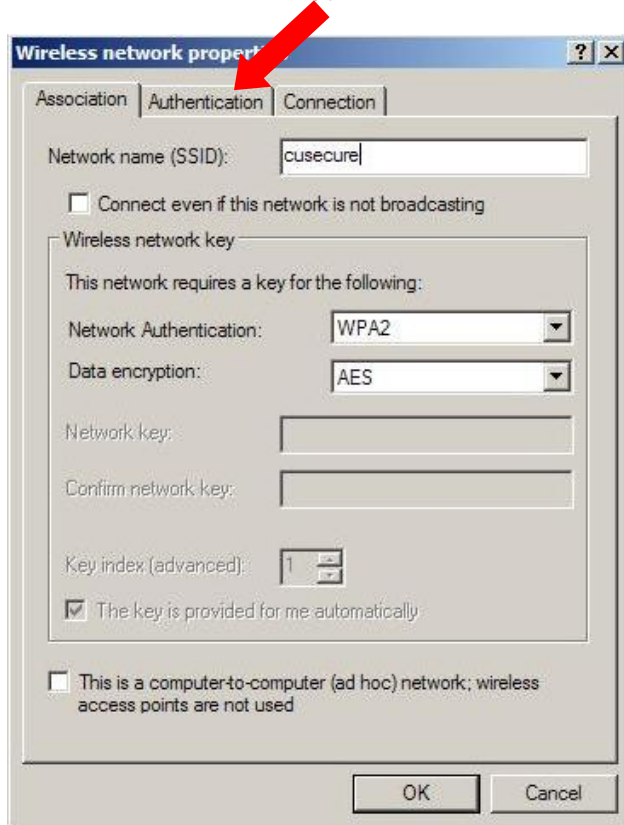
3. Ensure that the two check boxes at the bottom are checked. Then select the *Wireless Networks* tab.



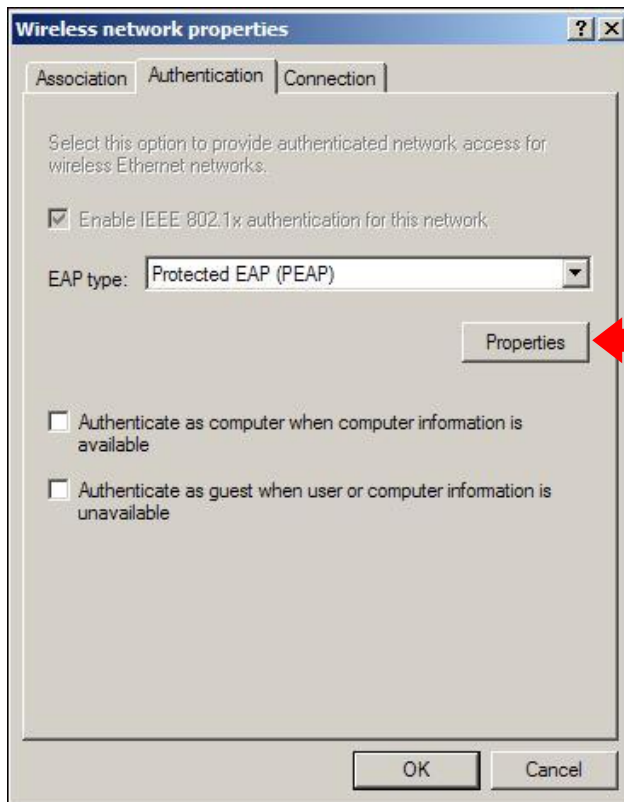
4. Ensure the *Use Windows to configure my wireless network settings* box is checked. Click **Add**.



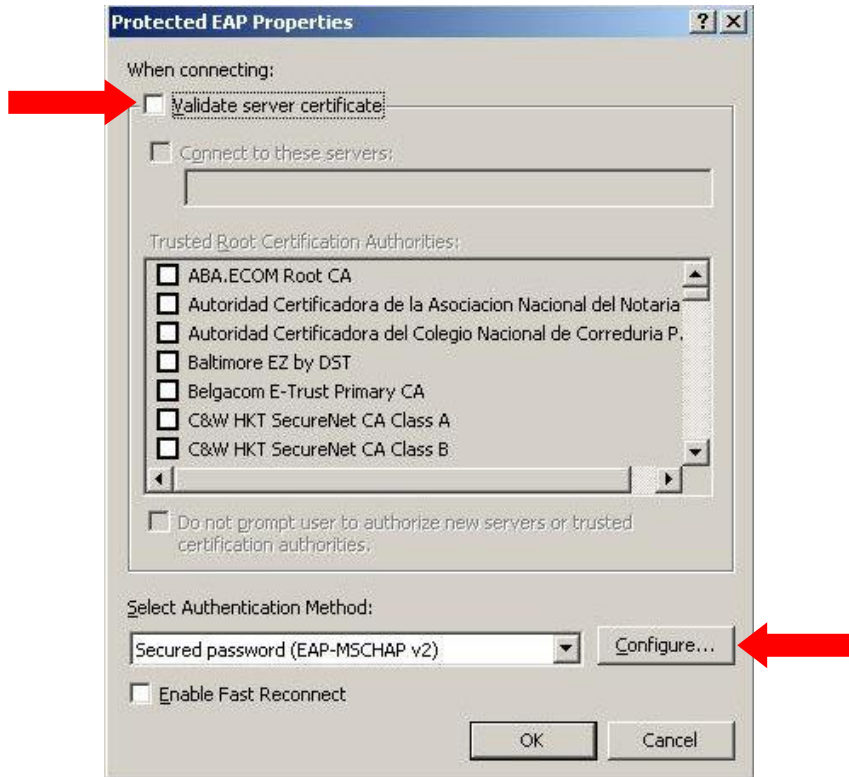
5. Add cusecure to the *Network name (SSID)* field. Select "WPA2" as the Network Authentication and "AES" for the Data Encryption. Then click the *Authentication* tab.



6. Select *Enable IEEE 802.1x authentication for this network* and select "Protected EAP (PEAP)" as the *EAP type*. Make sure ALL THE OTHER BOXES ARE UNCHECKED, then click **Properties**.



7. Your screen should look as follows, uncheck VALIDATE SERVER CERTIFICATE and other boxes as needed:



8. Click **Configure**.
9. Uncheck *Automatically use my Windows logon name and password (and domain if any)* and Click **OK**.



10. Click **OK** on all open windows until you are at the Network Connections window.
11. All Done! This is no need to do this setup again, just connect when needed.

Connecting

1. If you cannot connect to the wireless network, right click the wireless connection, select "Disable" and then "Re-enable". If still unsuccessful, double check your settings using this tutorial and try again.

2. Once you have successfully connected, you will see the following balloon in the bottom right-hand corner of your screen. Click on this balloon.



3. You will now be asked for your logon credentials. Enter your Concord UserID (email address not including the @concord.edu or @mycu.concord.edu) and password in the appropriate boxes. The *Logon Domain* box should be left blank. Click **Ok**.



You should not need to enter your credentials on subsequent connections to cusecure. When you connect to the wireless network for the first time with Windows XP, you will be prompted for your user credentials. XP will save the credentials you supply by default and use them for all future connections to the network.

You can clear your credentials by editing the registry. Start the registry editor (START->RUN->REGEDIT) and delete the *HKEY_CURRENT_USER\Software\Microsoft\EAPOL\UserEAPinfo* tree.

Note: Do not do this if you are not comfortable modifying the registry.

Need Help?

Call our help desk at 304-716-0054 or x5291 (Mon-Fri 8am-4pm) from in front of your computer.