

Figure 1: Relationship Between Mean ACT Scores and Mean Total CLA Scores for Freshmen

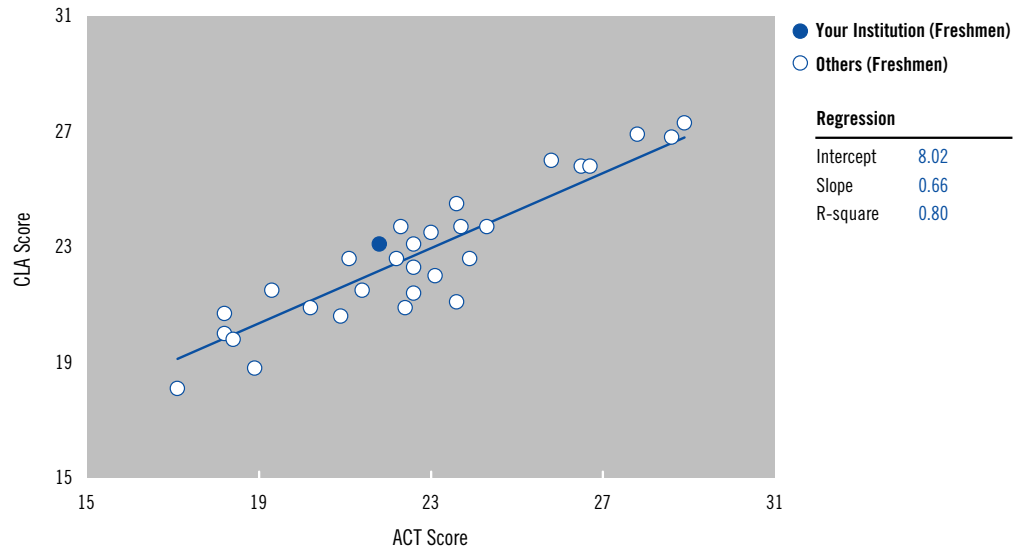


Figure 2: Relationship Between Mean ACT Scores and Mean Total CLA Scores for Seniors

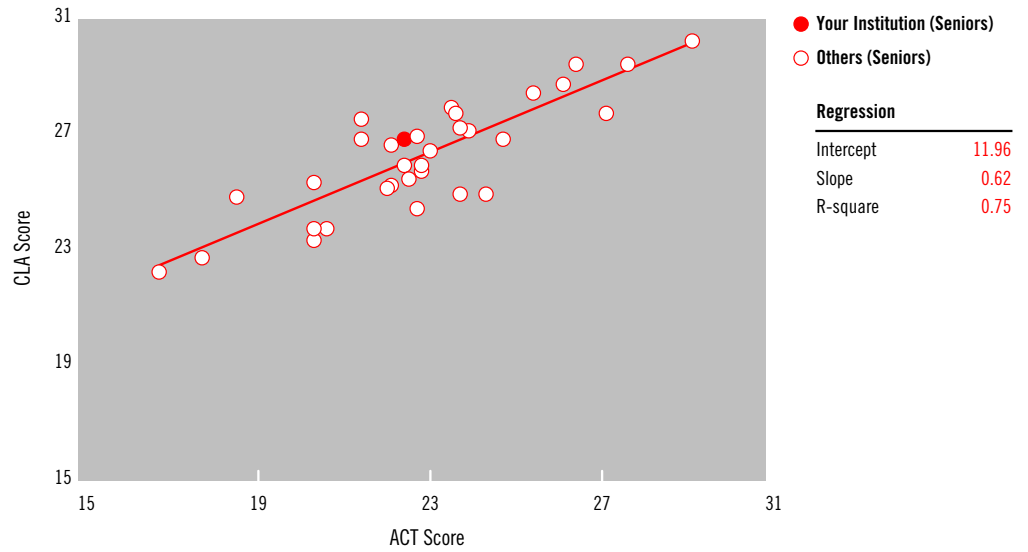


Figure 3: Relationship Between Mean ACT Scores and Mean Total CLA Scores for Freshmen and Seniors

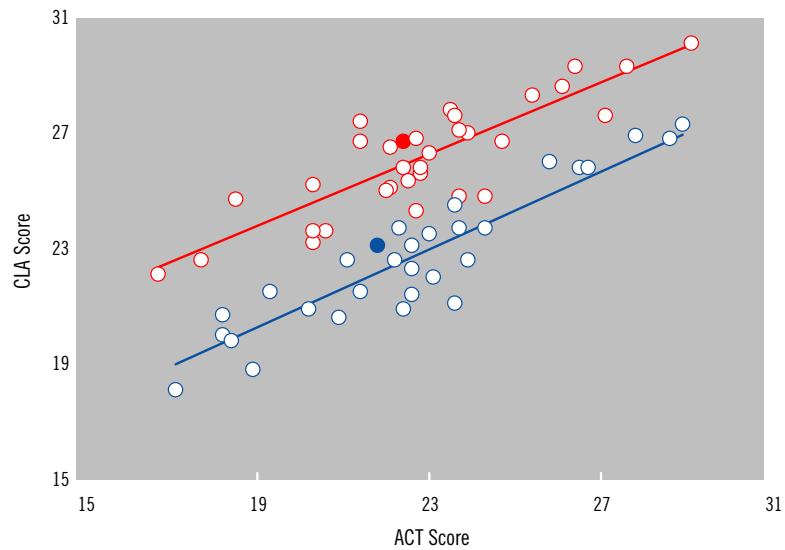


Table 3: Number of Freshmen and Seniors with Scores on Each Measure at Your School who Also Had an ACT Score

Measure	Number of Freshmen	Number of Seniors
Performance Task	78	29
Analytic Writing Tasks	72	37
Make-an-Argument	74	37
Critique-an-Argument	76	37
Total score	78	66
ACT score	21.8	22.4

Table 4: Deviation Scores and Relative-to-Expected Results at Your School for Freshmen and Seniors

Measure	Freshmen		Seniors	
	Deviation Score	Relative to Expected	Deviation Score	Relative to Expected
Performance Task	0.05	At	1.58	Above
Analytic Writing Tasks	1.20	Above	-0.01	At
Make-an-Argument	1.21	Above	-0.31	At
Critique-an-Argument	1.00	Above	0.28	At
Total score	0.75	At	0.82	At

Note: Deviation (residual) scores are reported in terms of the number of standard error units the school's actual mean deviates from its expected value.

Table 5: Difference Scores and Relative-to-Average Results (Comparison of Freshmen and Senior Deviation Scores)

Measure	Difference Score	Relative to Average
Performance Task	1.53	Above
Analytic Writing Tasks	-1.21	Below
Make-an-Argument	-1.52	Below
Critique-an-Argument	-0.72	Below
Total score	0.07	At

Note: Difference Score = Senior Deviation Score – Freshmen Deviation Score

Table 6: Mean Scores for Freshmen and Seniors in the CLA Sample and at Your School that Met the Dual Requirement of Having at Least 25 Students with Both CLA and ACT Scores

Measure	Freshmen		Seniors	
	All Schools	Your School	All Schools	Your School
Performance Task	22.5	22.1	24.8	26.2
Analytic Writing Tasks	22.9	24.1	27.3	27.1
Make-an-Argument	22.6	23.9	26.9	26.3
Critique-an-Argument	22.6	23.5	27.3	27.5
Total score	22.8	23.1	26.1	26.7
ACT score	22.7	21.8	22.7	22.4

Table 7: Comparison of Observed and Expected Outcomes at Your School

Outcome	Your School	Expected Value	Deviation Score	Relative to Expected
First-year retention rate	NA	NA	NA	NA
4-year graduation rate	23.5	17.6	0.60	At
6-year graduation rate	35.0	37.6	-0.30	At
Freshmen CLA total score	23.1	22.3	0.75	At
Senior CLA total score	26.7	25.9	0.82	At

Note: For a few schools, the equation resulted in a predicted 4-year graduation rate slightly less than zero. For these schools, the predicted rates are reported as zero.

Table 8: Summary Statistics for All Fall 2004 Freshmen Tested at Your School

Measure	Number of Students	Mean Scale Score	Standard Deviation	25th Percentile	75th Percentile
Performance Task	79	22.1	4.2	19.0	24.0
Analytic Writing Tasks	73	24.1	3.1	22.0	26.0
Make-an-Argument	75	23.9	4.0	20.0	26.0
Critique-an-Argument	77	23.5	4.3	21.0	25.0
ACT score	78	21.7	3.4	20.0	24.0

Table 9: Summary Statistics for All Fall 2004 Freshmen in the CLA

Measure	Number of Students	Mean Scale Score	Standard Deviation	25th Percentile	75th Percentile
Performance Task	3,414	22.3	4.8	19.0	26.0
Analytic Writing Tasks	3,261	22.7	4.2	19.0	26.0
Make-an-Argument	3,334	22.5	4.7	20.0	26.0
Critique-an-Argument	3,332	22.4	4.8	17.0	25.0
ACT score	3,029	22.6	4.6	19.0	26.0

Table 10: Summary Statistics for Schools that Tested Fall 2004 Freshmen

Measure	Number of Schools	Mean Scale Score	Standard Deviation	25th Percentile	75th Percentile
Performance Task	39	22.2	2.5	20.6	23.9
Analytic Writing Tasks	39	22.6	2.4	21.0	24.2
Make-an-Argument	39	22.3	2.5	20.8	24.1
Critique-an-Argument	39	22.3	2.4	21.0	23.7
Total score	39	22.3	2.5	20.7	23.8
ACT score	37	22.1	3.1	19.3	23.5

Table 11: Summary Statistics for All Spring 2005 Seniors Tested at Your School

Measure	Number of Students	Mean Scale Score	Standard Deviation	25th Percentile	75th Percentile
Performance Task	35	25.2	5.1	22.0	30.0
Analytic Writing Tasks	41	26.8	4.0	24.0	30.0
Make-an-Argument	41	26.0	4.5	23.0	30.0
Critique-an-Argument	41	27.0	4.6	25.0	28.0
ACT score	66	22.4	5.1	19.0	28.0

Table 12: Summary Statistics for All Spring 2005 Seniors in the CLA

Measure	Number of Students	Mean Scale Score	Standard Deviation	25th Percentile	75th Percentile
Performance Task	1,616	24.8	5.0	21.0	28.0
Analytic Writing Tasks	1,604	27.1	4.0	24.0	29.0
Make-an-Argument	1,611	26.7	4.5	23.0	30.0
Critique-an-Argument	1,616	27.0	4.7	25.0	28.0
ACT score	2,462	23.0	4.7	20.0	26.0

Table 13: Summary Statistics for Schools that Tested Spring 2005 Seniors

Measure	Number of Schools	Mean Scale Score	Standard Deviation	25th Percentile	75th Percentile
Performance Task	34	24.7	1.9	23.7	25.7
Analytic Writing Tasks	32	27.0	2.0	26.0	28.3
Make-an-Argument	32	26.6	1.9	25.7	27.9
Critique-an-Argument	32	27.0	2.2	25.9	28.4
Total score	42	25.4	2.0	24.1	26.9
ACT score	32	22.8	2.7	21.4	24.1