

What's UP in GEAR UP SWV

"Securing a legacy of strength and resilience in Appalachia."



Featured Articles:

- **Black History Month**
- **HBCUs in WV**
- **Student Surveys**
- **Game on GEAR UP SWV**
- **Don't Forget Your College Visits**
- **GEAR UP SWV Summer Camps Announced!**
- **Spring RAC Save the Date**
- **Year 3 Planning Timeline**
- **High Dosage Tutoring**

Building Relationships

GEAR UP SWV helps students navigate the path to reach their college-going goals. We are also here to support teachers and families on this journey. There are other folks who can play a vital role in this journey for teachers, parents/guardians and students. Counselors play a key role in sharing opportunities while financial aid directors can help navigate the FAFSA or Free Application for Federal Student Aid. FAFSA is the only way to access federal assistance to help pay for college. Right now, we hope GEAR UP SWV students are learning who their Algebra 1 teacher will be as we lift the bar to help more students pass this class by the end of 9th grade.

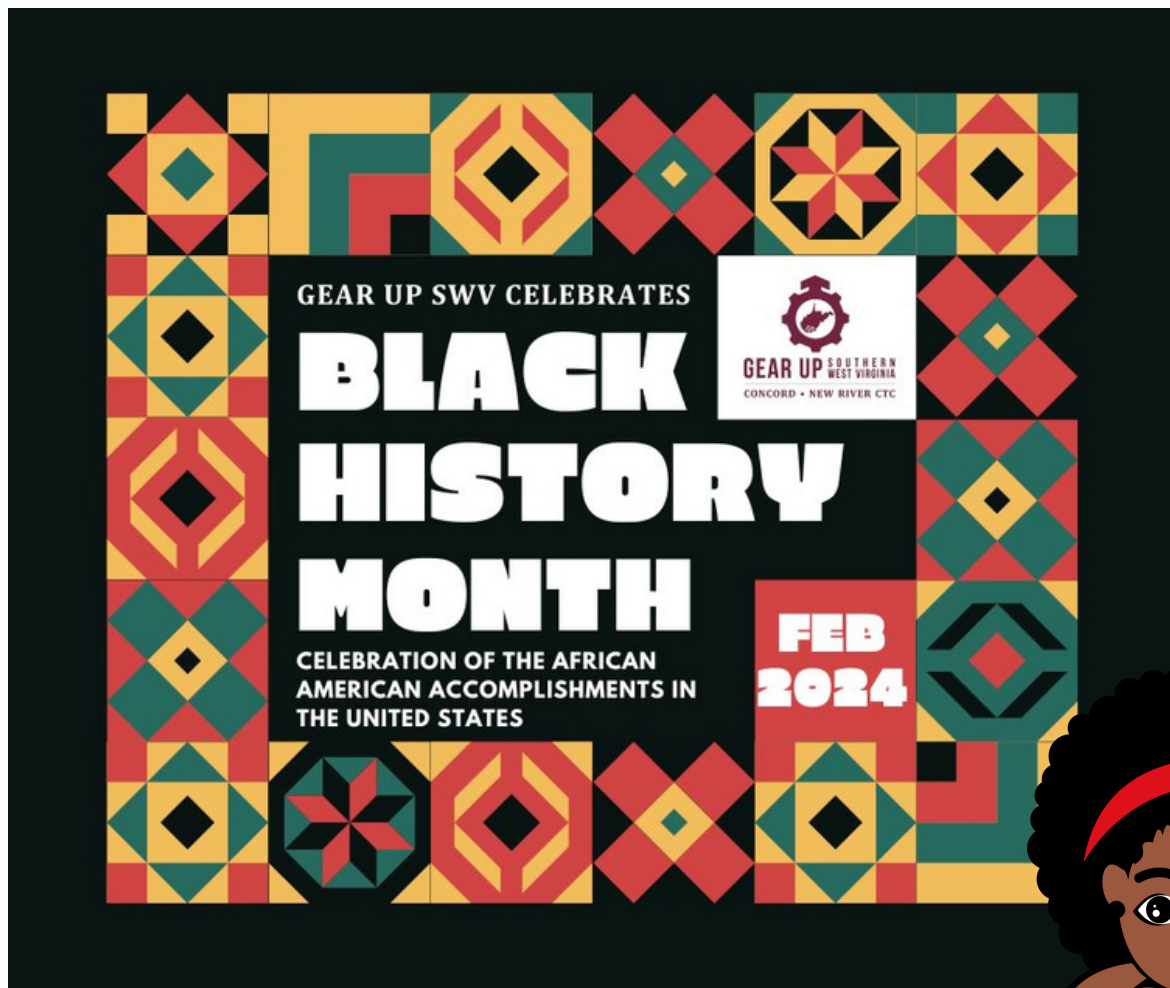


WWW.CONCORD.EDU/GEARUP

@gearupswv | gearup@concord.edu



It's February - Happy Black History Month! 🎉🎊



Historically Black Colleges & Universities

Historically Black Colleges and Universities (HBCU) were founded to educate Black students. The makeup of students who attend HBCUs has changed over time. Today, they enroll students of all races.

history

@gearupswv | gearup@concord.edu

WWW.CONCORD.EDU/GEARUP

West Virginia HBCU

There are two HBCUs in West Virginia.



West Virginia State University

Founded in 1891 as a Historically Black College (HBCU), WVSU has evolved to serve a diverse student population of about 3,500. WVSU is located just a few miles from Charleston, WV.

[More about WVSU here.](#)



West Virginia State University was founded under the provisions of the Second Morrill Act of 1890 as the West Virginia Colored Institute, one of 19 land-grant institutions authorized by Congress and designated by the states to provide for the education of black citizens in agriculture and the mechanical arts. West Virginia was one of the states that maintained segregated educational systems at that time. [More history here.](#)

Bluefield State University

Bluefield State College was founded in 1895 to provide higher education to the children of African-American coal miners in the region. The school is located in Bluefield, WV in Mercer County.

Bluefield State College was founded in 1895 to provide higher education to the children of African-American coal miners in the region. Over time, changes in society and industry brought changes to the school. Increased automation in the coal industry meant fewer jobs in the area and a long-term demographic shift. After the 1954 Brown vs. Board of Education decision outlawed school segregation across the nation, the combination of high educational quality and low tuition costs at Bluefield State began attracting students of European descent, a trend that has continued for decades. Even today, Bluefield State's level of racial diversity is twice the state average. [More history here.](#)





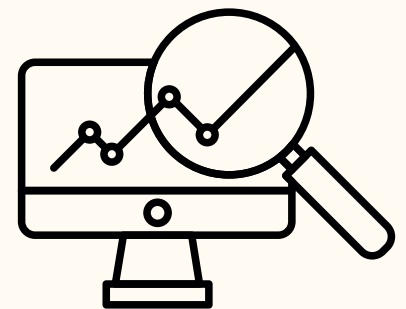
GEAR UP SOUTHERN
WEST VIRGINIA
CONCORD • NEW RIVER CTC

Student Surveys Student Sound Off!



In January, schools began administering a student survey for GEAR UP SWV with assistance from Vela Institute. The survey system is expected to remain open until Friday, Feb. 9, 2024. The information will be used to identify needs and inform GEAR UP SWV programming and event planning for the 2024–25 school year. We appreciate your assistance in helping students understand the importance of participating in these surveys.

GEAR UP SWV is proud to work with the Vela Institute for the data analytics needs of the program.



Vela Institute is a non-profit organization dedicated to increasing access to evaluation, analytics and data tracking to education partners to improve student and community outcomes. Established in 2017, Vela Institute accomplishes its mission through applied research, data analytics, and the use of evidence-based practices.

GAME ON

GEAR UP SWV!

What: FREE Admission to Concord University Women's Basketball game, no re-entry fee to Men's game!

When: Saturday, Feb. 10, 2024 - 2pm Tip Off, Admission is free until HALFTIME of women's game

Where: The Carter Center at Concord University, 1000 Vermillion St., Athens, WV 24712

How: Students should tell ticket collectors they are "with GEAR UP SWV" and have a "community pass."

This will allow them entry into the women's game and the men's game! There is no re-entry fee for the men's game!



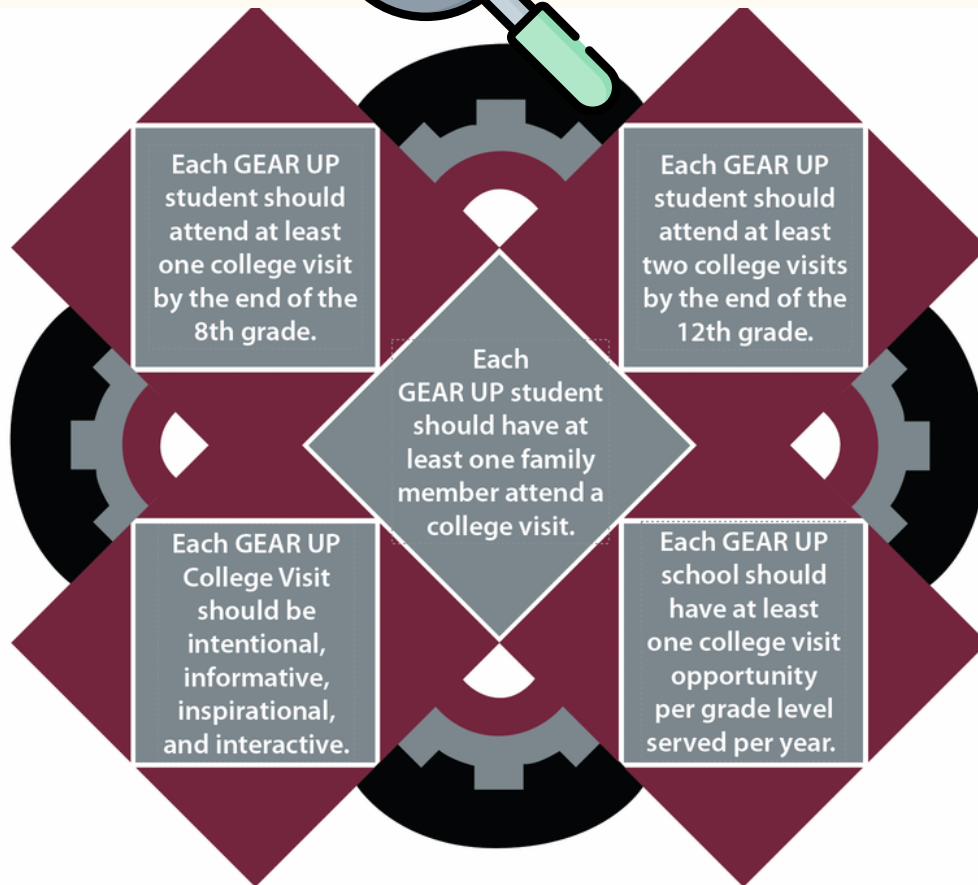
The poster features a silhouette of a man wearing a white toga and a laurel wreath, with red sunglasses. At the top is the Concord University logo, a stylized 'C' with a paw print. The text reads: 'CONCORD WOMEN'S BASKETBALL', 'TOGA NIGHT!', 'Wear a toga or white!', 'GEAR UP SWV Night!', and 'Feb 10th vs. Salem'. At the bottom, it says '*FREE ADMISSION for GEAR UP SWV students'. There is also a gear logo with a map of West Virginia inside it, and the text 'GEAR UP SOUTHERN WEST VIRGINIA CONCORD • NEW RIVER CTC'.



GET THE WORD OUT

- Local Coordinators and District Liasons - Please consider a "robo-call" to parents.
- Feb. 10's game is "Toga" or "White out" night at the Carter Center. Students are encouraged to wear their GEAR UP SWV shirts or wear white to participate in spirit night.
- Students with permission should go to center court for a social media photo after announcement

Don't Forget College Visits



Q: What is considered a college visit?

A: A physical visit to a college campus by a student facilitated/supervised/led by GEAR UP staff, teachers, college representatives, or other school staff. College visits should include an official tour, presentation(s) by admissions, financial aid, academic departments, student affairs, residence life, multicultural affairs, or other college departments.

Why a college visit?

- Research shows that students who attend at least one college visit are 1 ½ times more likely to enroll in college after high school graduation, and even three times more likely if a parent attends the college visit with the student (Tillery, 2013*).
- Not only are college visits an important GEAR UP SWV service to students and their families, but college visits are also one of the GEAR UP SWV Partnership's COLLEGE READY: SKILLS priorities.

Fill out this form and start planning your college visit today!

GEAR UP SWV

2024 Summer Camps



- Adventure/Leadership Camp at New River Technical and Community College - June 10 - 14
- STEM Camp at WVU Tech - June 17-21
- GEAR UP SWV Concord University Media/Journalism Camp - June 24-27

- Student Leadership Retreat at Appalachian State University in Boone, NC, - July 14 -18
- Adventure STEM Camp (ACE Adventure) - July 29 - 31



Summer BOSS Program - details coming soon!
 Watch GEAR UP SWV social media pages for more information. Check concord.edu/gearup to register.

CONNECT WITH GEAR UP SWV

Remember to share your events on social media and with GEAR UP staff so we can help celebrate around the state (and country)! Be sure to tag GEAR UP SWV and use these hashtags on social media: #GEARUPworks and #GEARUPSWV give us a follow on the following platforms and keep up with the rest of the GEAR UP SWV team, find out about upcoming events and more!

@gearupswv



@GEARUPSWV



GEAR UP SWV

We Love a Good Plan



Year 3 Planning Timeline

- **March 15** : Email with grant year 3 (September 1, 2024 through August 31, 2025) workplan templates & a development guide will go out to District Liaisons.
- **March 15 - April 17** : Brainstorm ideas for college visits, GEAR UP SWV clubs, afterschool activities, etc. that work for students in your school. Brainstorm with Partnership Coordinators, prepare questions for the Spring RAC meeting.
- **April 18** : Bring ideas and questions along with template to Concord University for RAC meeting. (GEAR UP SWV will assist counties in developing GY3 workplans at the April RAC meeting.)
- **April 19 - May 31** : Counties will complete workplan draft for review.
- **May 31** : Workplan draft due.
- **August** : Collaborate with GEAR UP SWV on any necessary revisions. (Must be finalized by September 1. Please plan accordingly.)

Workplans are essential to meeting all grant objectives.



A Service of **The Princeton Review**

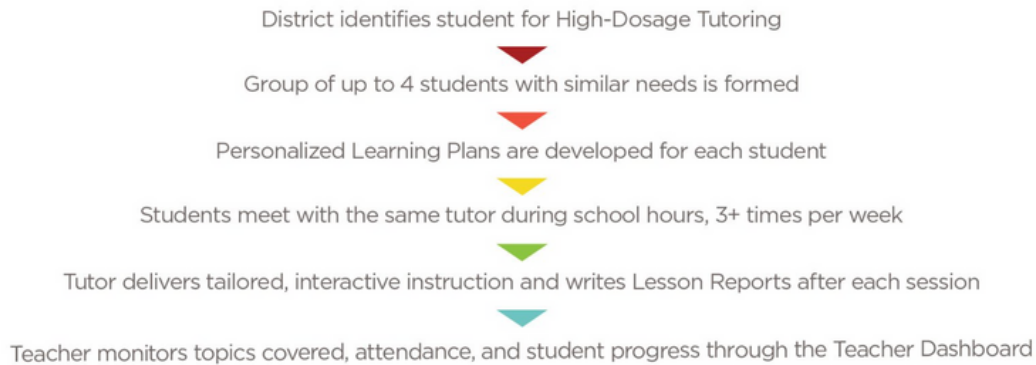
High Dosage Tutoring Now Available

Tell your teachers!

Teachers: High-Dosage Tutoring Implementation Roadmap K-12 High-Dosage Tutoring Microwebinars

HOW HIGH-DOSAGE TUTORING WORKS

High-Dosage tutoring enables teachers to refer students who need intensive subject support, and then receive Lesson Reports to chart learner achievements.



1. Visit tutor.com/GEARUPSWV
2. Enter the username, which is the same as the Student ID
3. Enter the password **GEARUPSWV**

Quick Links

- Teachers: [School Day Usage Guide: Incorporating Tutor.com into the Classroom](#)
- Students/Parents: [VIDEO – Tutor.com 101, Episode 1: Getting Started](#)



GEAR UP SOUTHERN
WEST VIRGINIA
CONCORD • NEW RIVER CTC



**Thank you for your work on
this program for the students
in southern West Virginia.
The relationships we are
building will have a lasting
impact.**

***Together we ARE securing
a legacy of strength and
resilience in Appalachia.***